

Dyslexia

Dyslexia is a common learning difficulty that can cause problems with reading, writing, and spelling.

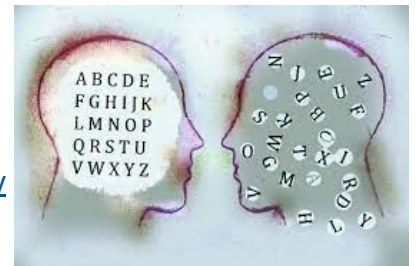
It's a specific learning difficulty, which means it causes problems with certain abilities used for learning, such as reading and writing.

Research based information about Dyslexia:

<https://www.understood.org/en/learning-thinking-differences/child-learning-disabilities/dyslexia/what-is-dyslexia#item3>

<https://childmind.org/article/understanding-dyslexia/>

<https://www.bdadyslexia.org.uk/advice/children/how-can-i-support-my>



Strategies to Support your child:

- Allow children to use a word processor to complete some written tasks. This highlights spelling errors and offers alternatives. If they can't type, encourage them to learn, so that they are able to use a word processor with more speed and fluency. You could also 'scribe' some of their work for them, so that they don't feel overwhelmed by the task: <https://www.bbc.co.uk/bitesize/topics/zf2f9j6/articles/z3c6tfr>
- This website is useful in showing how to use mind mapping, when structuring and developing written work: <https://kidengage.com/blog/2019/02/mind-mapping-for-children-how-to-teach-children-to-use-mind-maps/>
- Some children may access age related audiobooks to develop their love of reading. This will develop their vocabulary and comprehension, without them even realising that they are learning: <https://stories.audible.com/start-listen>
- Paired reading. Encourage children to read one page and you read the next. Read some books to them for pleasure and invite them to read a section if they want to, this will help develop their love of books and stories. <https://www.bdadyslexia.org.uk/advice/children/how-can-i-support-my-child>
- <https://dyslexia-assist.org.uk/for-parents/what-can-i-do-at-home-to-help-my-child/>
- Memory games are available on: <https://www.weareteachers.com/working-memory/>

What to do if I am worried about my child

Speak to your child's class teacher either in person, email or telephone.

enquiries@cranwell.lincs.sch.uk

